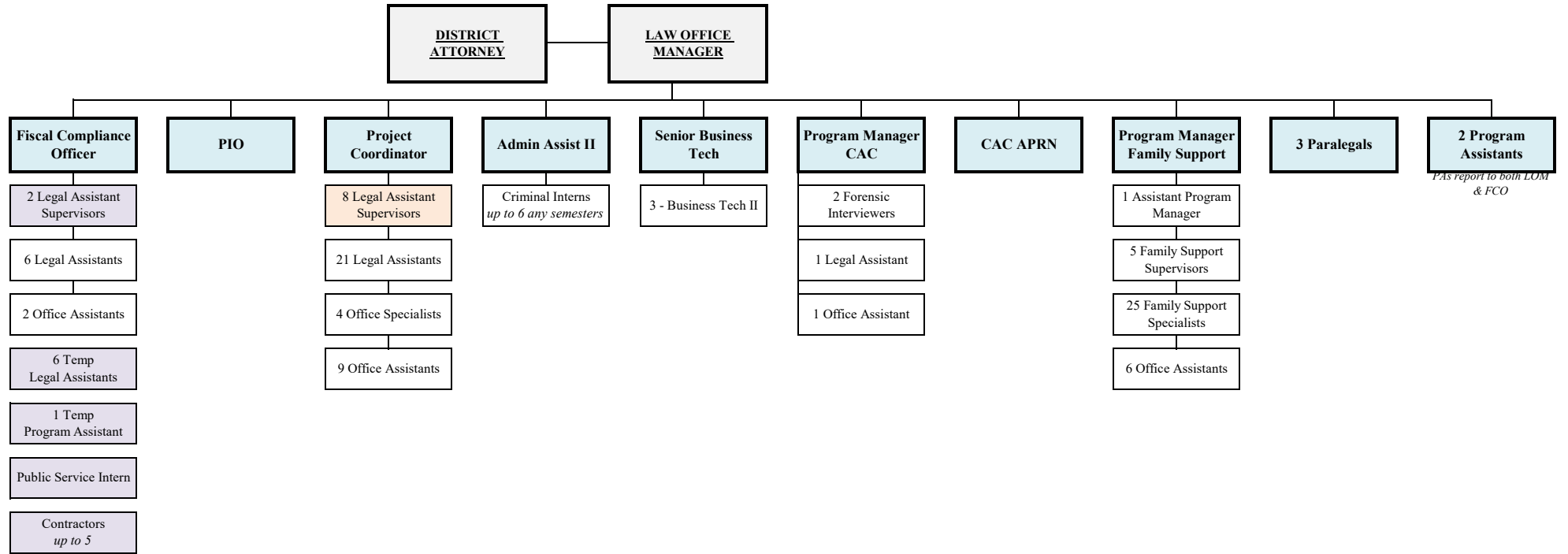
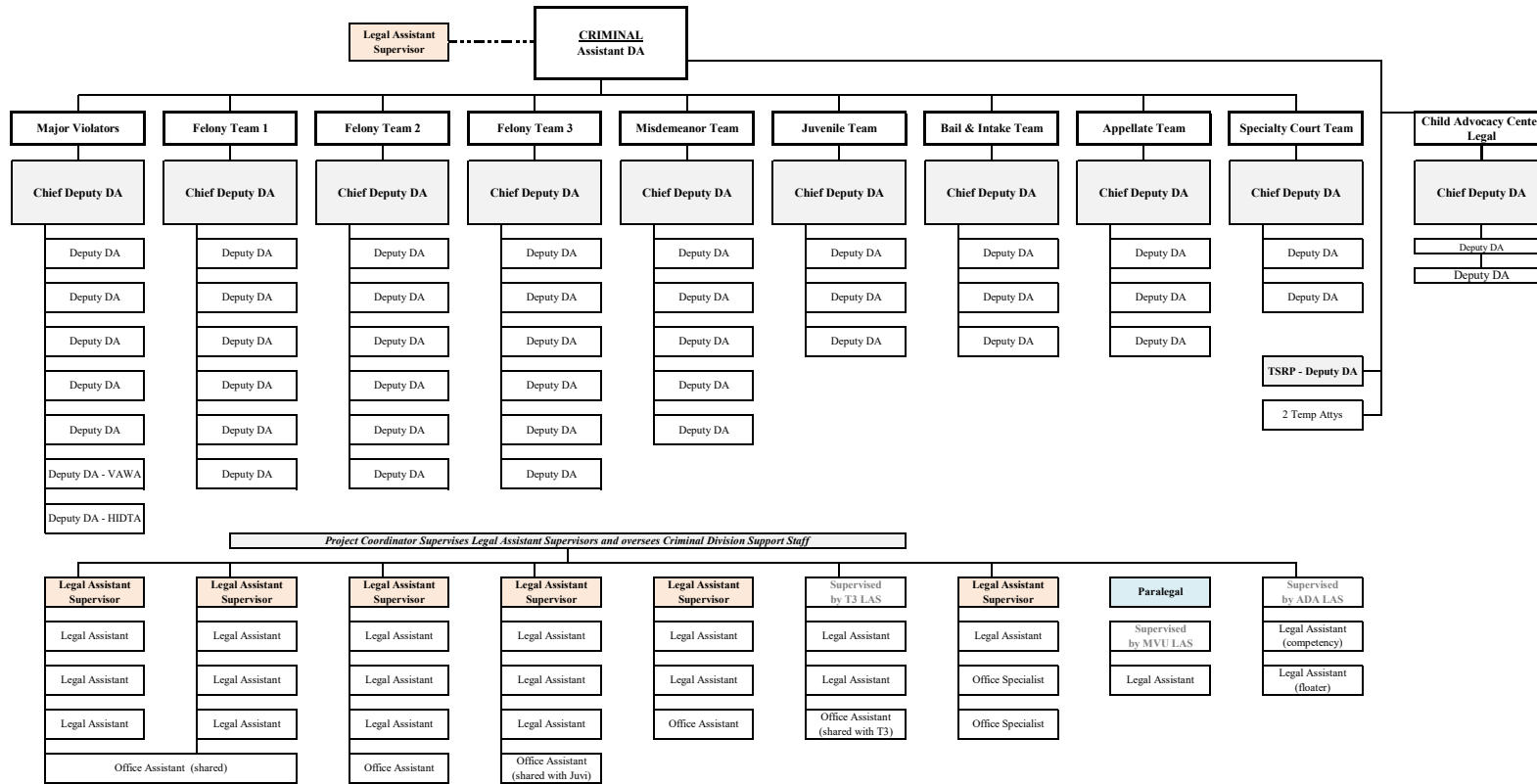


LEGEND: ADV=Advocate DDA=Deputy District Attorney CSC SUP=Child Support Collection Supervisor CSCS=Child Support Collection Specialist INV=Investigator LAS=Legal Assistant Supervisor LAL=Legal Assistant Lead LA=Legal Assistant MGR=Program Manager OA=Office Assistant OS=Office Specialist PA = Program Assistant Interp = Interpreter

Some grant-funded positions are intermittent hourly or temp (via an agency) positions

For supervisory reporting lines, see following pages

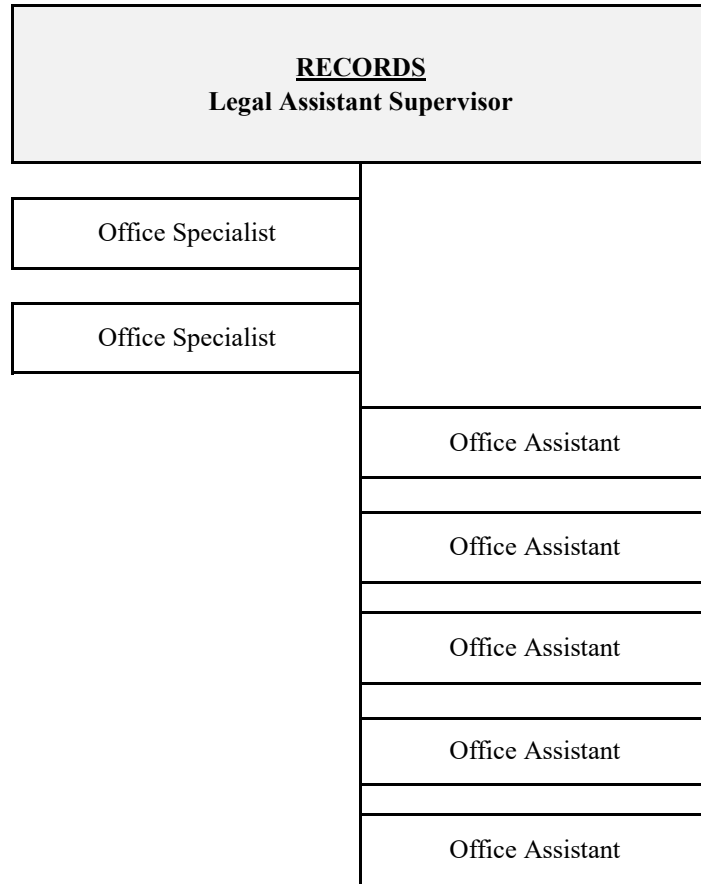




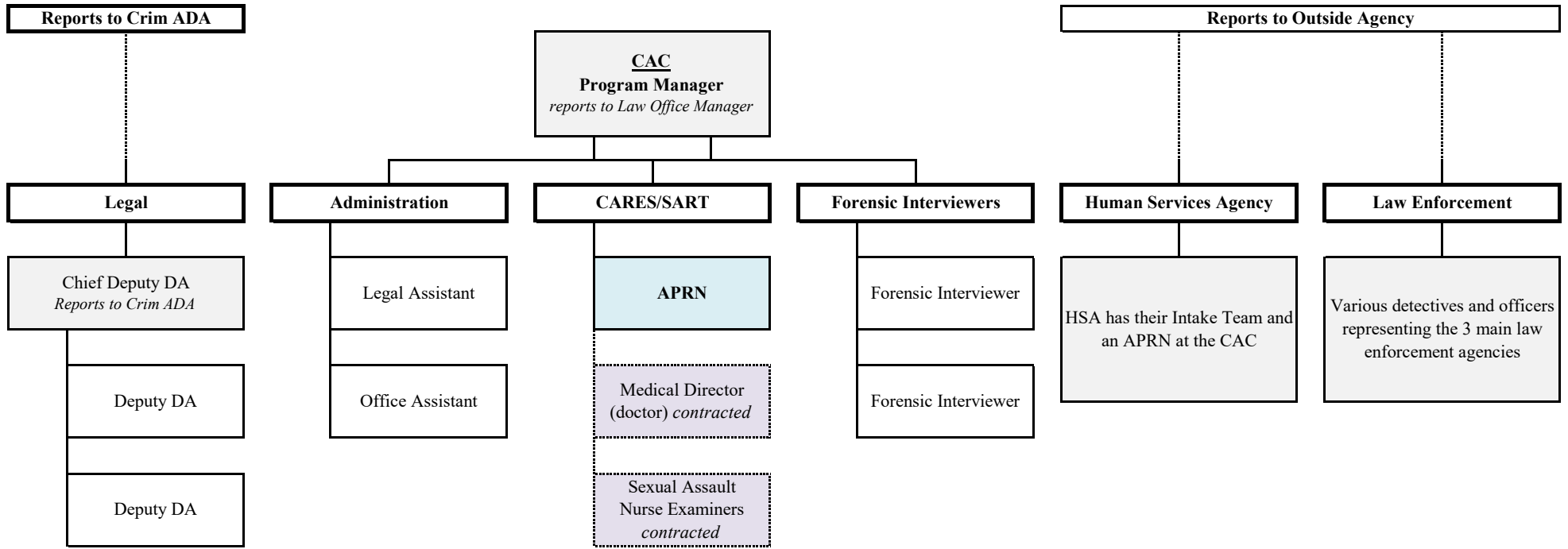
Office Assistants are shared between two teams

Legal Assistant Supervisors are supervised by the Project Coordinator

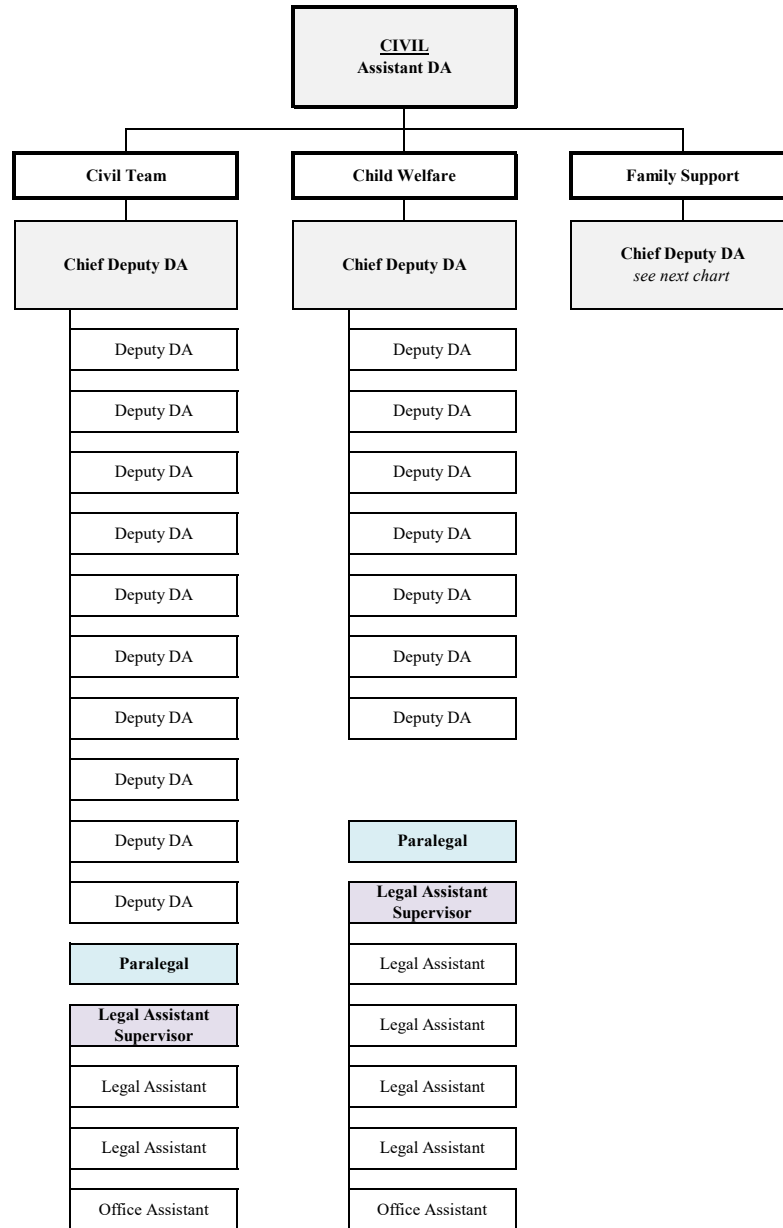
Paralegal is supervised by the Law Office Manager



Legal Assistant Supervisor is supervised by the Project Coordinator



*CARES/SART contractors are supervised by the Fiscal Compliance Officer
Program Manager & APRN are supervised by the Law Office Manager*



*Legal Assistant Supervisors are supervised by the Fiscal Compliance Officer
Paralegals are supervised by the Law Office Manager*

WASHOE COUNTY DISTRICT ATTORNEY'S OFFICE

EMPLOYEES	Admin	CAC	Civil	CPS	Crim	Fam Support	INV-VWAC	Records	TOTAL
DA	1								1
LOM	1								1
FCO	1								1
AAII	1								1
PJC	1								1
PGR AS	2								2
IT	4								4
PIO	1								1
Intern	1								1
ADA			1		1				2
CDDA		1	1	1	10	1			14
DA		2	10	7	41	1			61
Adv							5		5
Adv Sup							1		1
AMGR						1			1
APRN		1							1
C INV							1		1
CS Sp						25			25
CSCS						5			5
FOR		2							2
IA							9		9
INTRP							1		1
INV							10		10
LS		1	2	4	20		3		30
LSS			1	1	7		1	1	11
MGR		1				1			2
OA		1	1	1	3	6	2	6	20
OS					2		2	2	6
PARA			1	1	1				3
S INV							2		2
	13	9	17	15	85	40	37	9	225
									225

TEMPS	Admin	ARPA	Crim	Fam Support	VOCA	TOTAL
Adv					3	3
DA			2			2
IA		2				2
IT				1		1
LS		5				5
PARA				1		1
PGR AS	1					1
	1	7	2	2	3	15